



LAW ON THE FRONTLINES:

MARYLAND FAMILY LAW





The Frontlines Project: Partners & Core Curriculum

The Frontlines project includes representatives from the

- Thurgood Marshall State Law Library ,
- Conference of Maryland Court Law Library Directors ,
- the Maryland Access to Justice Commission , and
- the Access to Justice Department of the Administrative Office of the Courts .

Instructors for each course will vary but the information provided is based on the core curriculum of the ongoing Frontlines Project.

Today's Crew



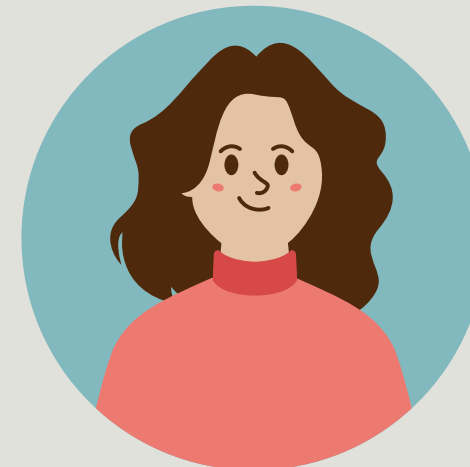
Joy Hollerbach

Thurgood Marshall
State Law Library



Catherine McGuire

Thurgood Marshall
State Law Library



Vickie Yiannoulou

Prince George's County
Circuit Court Law Library



Audrey Dingler

Thurgood Marshall
State Law Library

Pre-Assessment

WHAT DO YOU KNOW?

1. In which Maryland Court are family law cases generally heard?
2. A person wants to have their maiden name restored after their divorce - is this possible?
3. Does Federal, State, or Local law generally establish how a marriage is established?
4. My ex is several months behind on support payments. I know he earns plenty, he just doesn't want to pay. How do I get the money I need to support our children?



JUST THINK ABOUT THESE QUESTIONS FOR NOW
THEY MAY COME BACK LATER👁️👁️

Learning Outcomes

Describe

the general topic of
Family law.



Identify

the best secondary
resources.



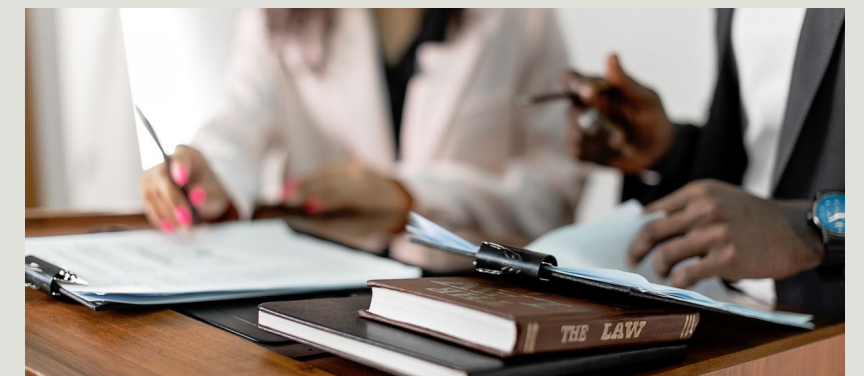
Utilize

primary resources
of law for the topic.



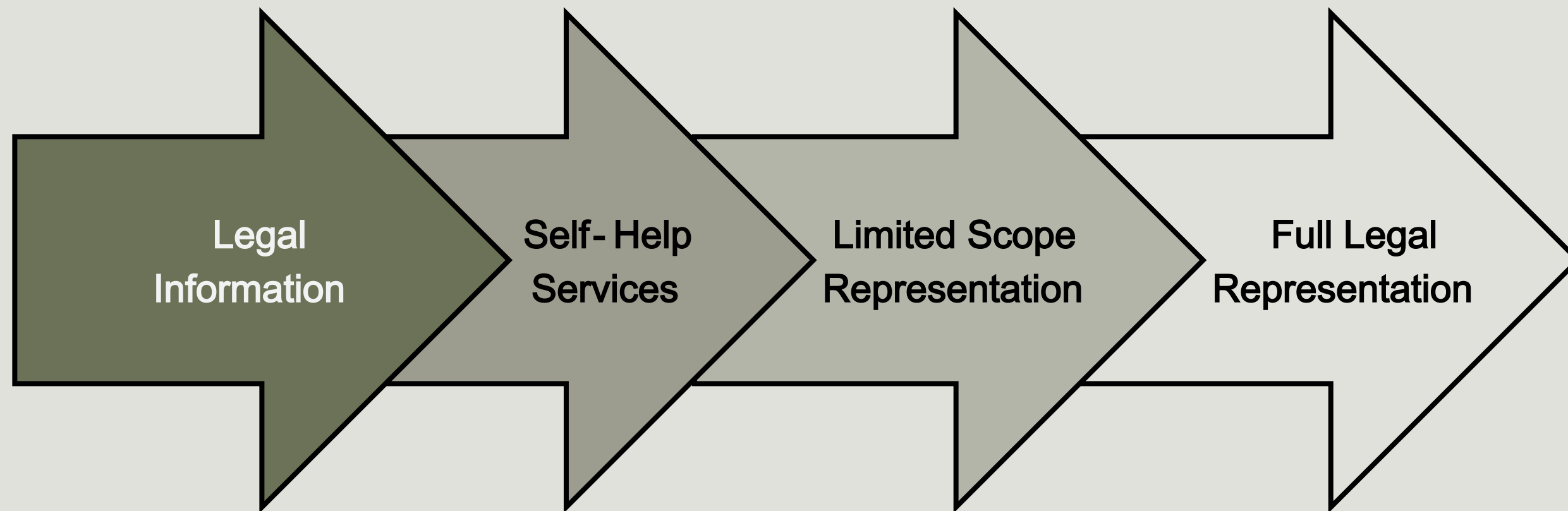
Assess & Select

options for referrals.



Access to Justice

A quick review...



Why are public libraries key players in access to justice?



What is



Divorce



Alimony



Child Support



Child Custody

*Domestic Violence can also
be grouped with family law*



Visitation Rights



Guardianship



Paternity



Name Changes

Family Law?



Common Conflicts

1. Child support - modification or non-payment
2. Visitation schedule - modification or breach
3. Guardianship of a minor/adult
4. Birth certificate issues
5. Establishing paternity

Details to know

MARYLAND STATE LAW ESTABLISHES HOW A MARRIAGE AND FAMILY ARE DEFINED, ESTABLISHED, AND DISSOLVED.

MARYLAND STATE LAW HANDLES MOST PROCESSES FOR DIVORCE, CHILD CUSTODY, AND CHILD SUPPORT.

FEDERAL LAW INCREASINGLY PASSES BROADLEVEL LEGISLATION WITHIN AREAS SUCH AS CHILD WELFARE, CHILD SUPPORT SERVICES, ADOPTION, AND CHILD PROTECTION



Best Practices Review

Rephrase

Rephrase the question.



Gather

details (who, when, what, where, a very broad why)



Identify

the type of need (information, law text, legal assistance, government services, forms)



Identify

the broad topic and terms



Locate

descriptive resources about the law (secondary sources)



Find

applicable law if needed (primary source)





Secondary Resources

[THE PEOPLE'S LAW LIBRARY \(PLL\)](#)

[MARYLAND COURT HELP TOPICS](#)

[NOLO \(WEBSITES AND TEXTS\)](#)

SECONDARY RESOURCES DEMONSTRATION



Practice

SECONDARY RESOURCES

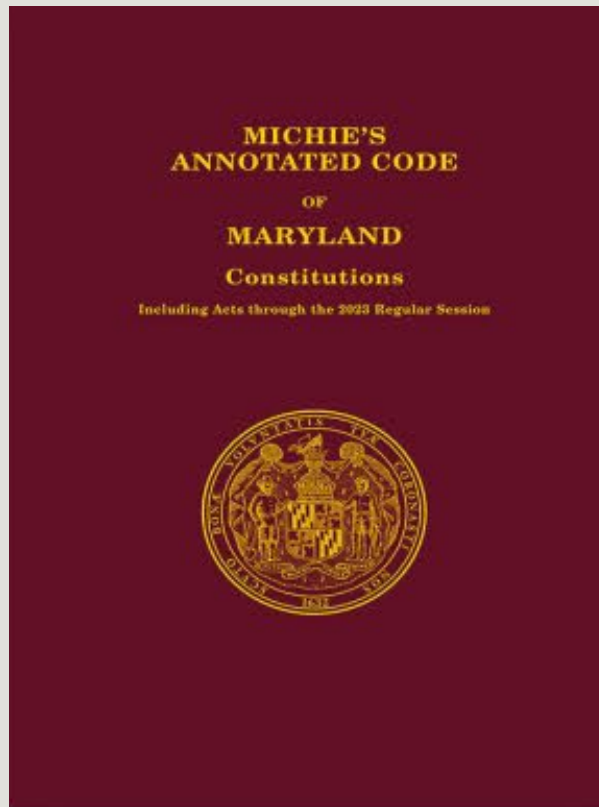
Choose one of the questions below. Then, using the resources just demonstrated (PLL, MdCourts, Nolo), see if you can locate resources to respond. Note which resource you used and if and where you found helpful information.

- My father is elderly and has been diagnosed in the early stages of dementia. Is there a way I can get the authority to manage his finances?
- My ex is several months behind on support payments. I know he earns plenty, he just doesn't want to pay. How do I get the money I need to support our children?

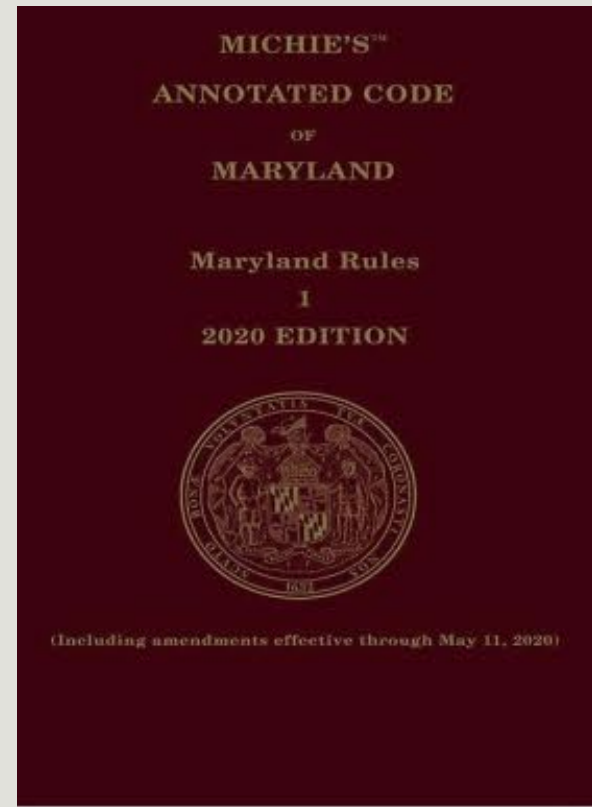
DROP YOUR FINDINGS IN CHAT



Primary Resources



Maryland Code,
Family Law Article



Maryland Rules,
Title 9 - Family Law Actions

LAW & COURT PROCEDURES

PRIMARY RESOURCES DEMONSTRATION





Practice

Choose one of the questions below. Then, using the resources just demonstrated, see if you can locate resources to respond. Note which resource you used and if and where you found helpful information.

1. Using the Family Law Article of the Maryland Code, locate the section that addresses someone having their maiden name restored after divorce.
2. Using the Maryland Rules, find the Rule that provides a general form for a Statement of Marital & Non - Marital Property.

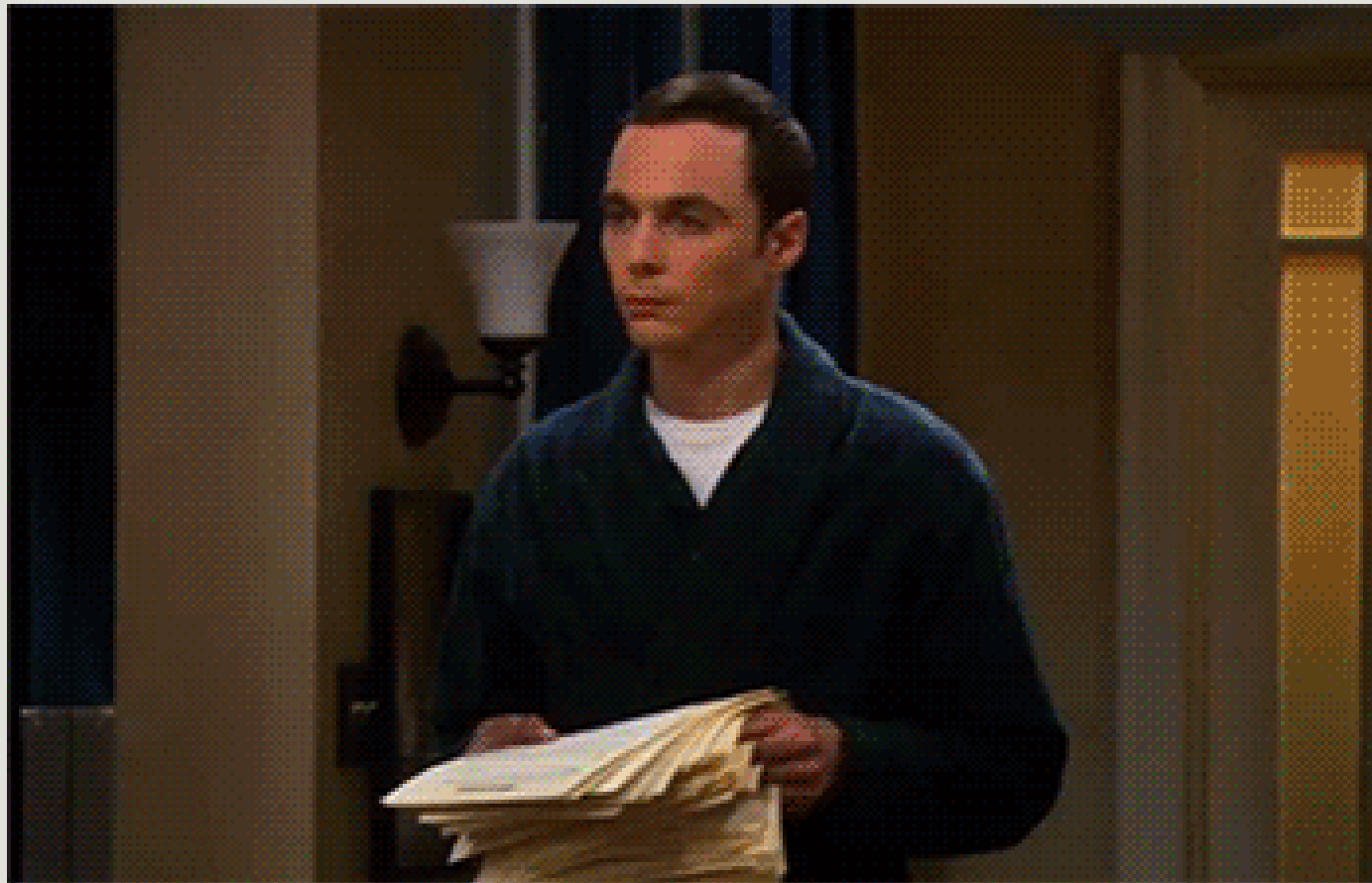
DROP YOUR FINDINGS IN CHAT

Forms

[Maryland Family Law Court Forms](#)

[Maryland Court Forms Finder](#)

[Maryland Courts Guide & File](#)



Connect to Legal Assistance



[Court Help Centers](#)



[Family Court Help Centers](#) - *note: not all family help centers assist with adult guardianship.*



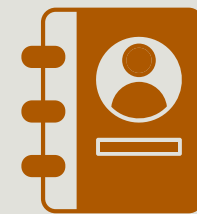
[Women's Law Center of Maryland](#)



[MD Legal Aid](#)



[Public Law Libraries](#)



[PLL Legal Services Directory](#)





Practice

Not including the specific referrals already discussed
can you identify an organization, either state or local,
that may assist with family law questions?

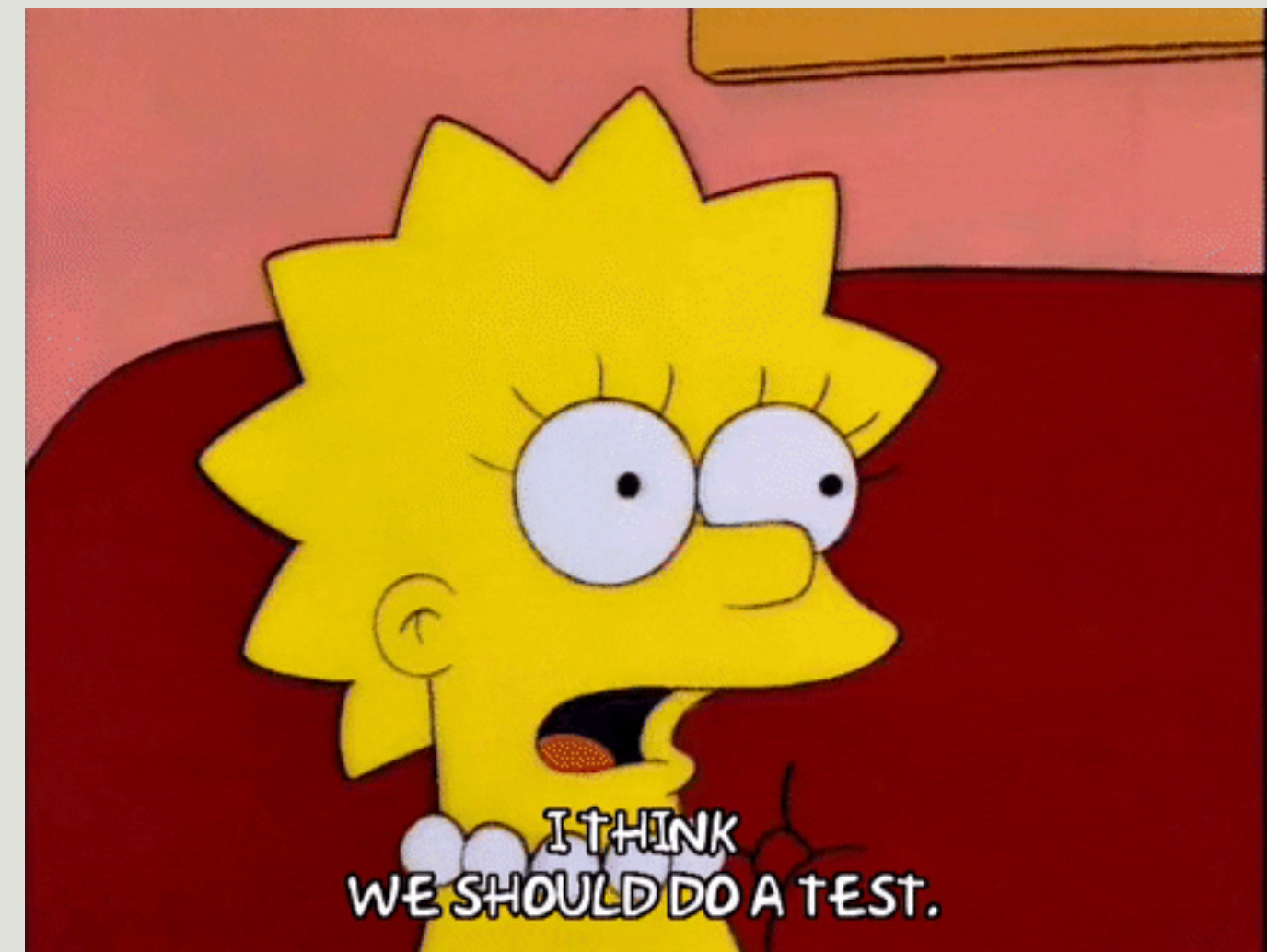
DROP YOUR FINDINGS IN CHAT

Re-Assessment

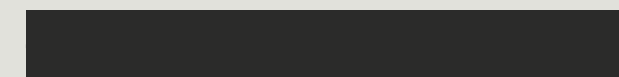
WHAT DO YOU KNOW?

- In which Maryland Court are family law cases generally heard?
- A person wants to have their maiden name restored after their divorce - is this possible?
- Does Federal, State, or Local law generally establish how a marriage is established?
- My ex is several months behind on support payments. I know he earns plenty, he just doesn't want to pay. How do I get the money I need to support our children?

DROP YOUR ANSWERS IN CHAT



QUESTIONS?





MORE QUESTIONS?

[Thurgood Marshall State Law Library](#)

410 -260 -1430

lawlibrary@mdcourts.gov

[A2J Department, Administrative Office of the Courts](#)

410 -260 -1258

inquiries@mdcourts.gov

[MD Access to Justice Commission](#)

443 -703 -3037

reena@msba.org

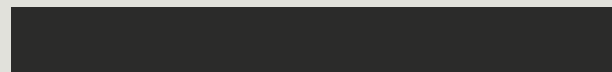
[Maryland Court & County Law Libraries](#)

P.S...

We are starting to put together the **Spring 2026** Frontlines Sessions.

If you've attended past sessions, are there some topics you would like to know more about? In the past we have offered sessions on the following topics: **Forms, Public Services, and Life & Health Planning.** Survey will be sent you after this webinar ends.

You can look at past sessions [here.](#)



THANK YOU!

