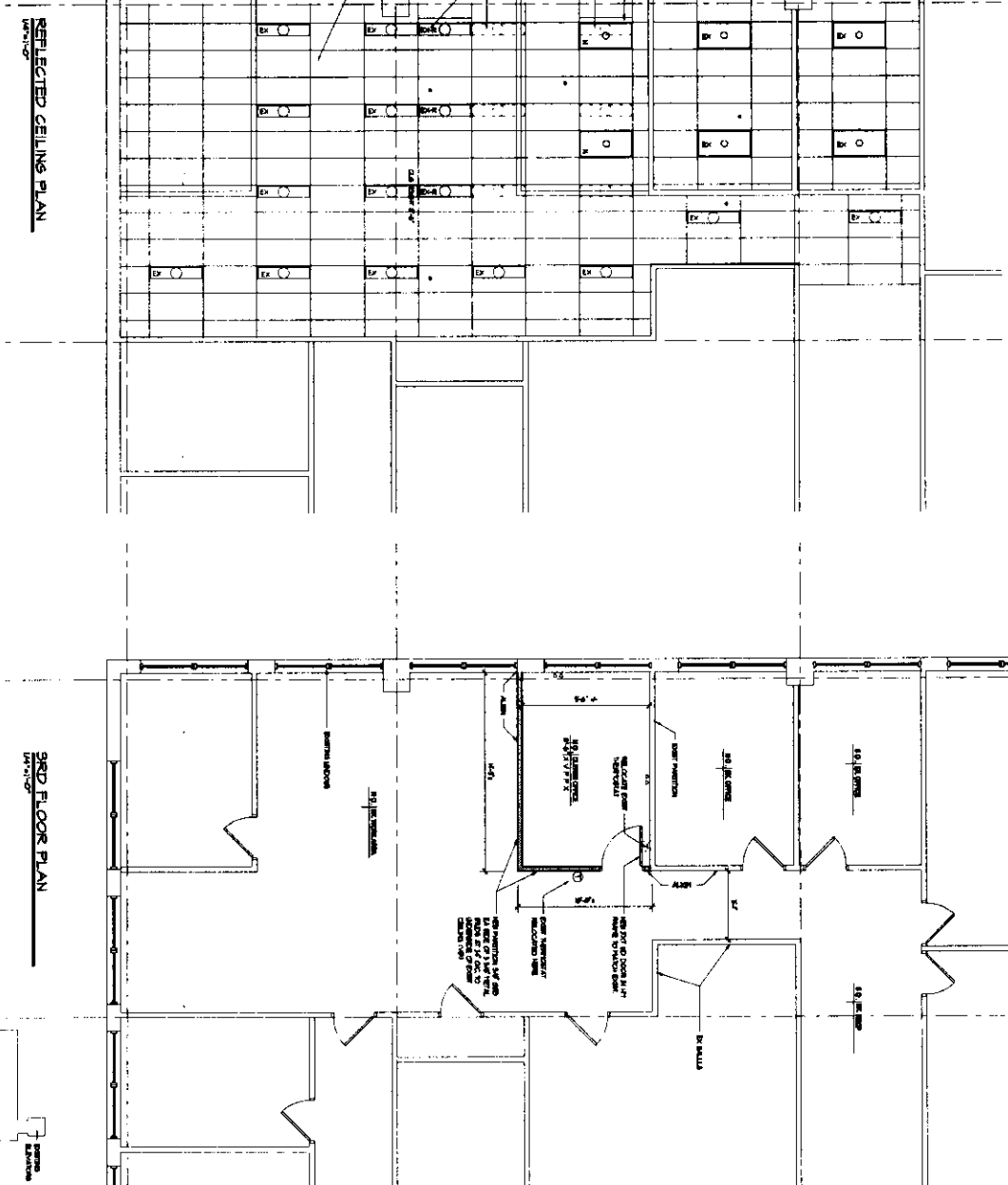




REFLECTED CEILING PLAN
 REFLECTED CEILING PLAN
 REFLECTED CEILING PLAN
 REFLECTED CEILING PLAN

- 1. REFLECTED CEILING PLAN
- 2. REFLECTED CEILING PLAN
- 3. REFLECTED CEILING PLAN
- 4. REFLECTED CEILING PLAN
- 5. REFLECTED CEILING PLAN
- 6. REFLECTED CEILING PLAN
- 7. REFLECTED CEILING PLAN
- 8. REFLECTED CEILING PLAN
- 9. REFLECTED CEILING PLAN
- 10. REFLECTED CEILING PLAN
- 11. REFLECTED CEILING PLAN
- 12. REFLECTED CEILING PLAN
- 13. REFLECTED CEILING PLAN
- 14. REFLECTED CEILING PLAN
- 15. REFLECTED CEILING PLAN
- 16. REFLECTED CEILING PLAN
- 17. REFLECTED CEILING PLAN
- 18. REFLECTED CEILING PLAN
- 19. REFLECTED CEILING PLAN
- 20. REFLECTED CEILING PLAN
- 21. REFLECTED CEILING PLAN
- 22. REFLECTED CEILING PLAN
- 23. REFLECTED CEILING PLAN
- 24. REFLECTED CEILING PLAN
- 25. REFLECTED CEILING PLAN
- 26. REFLECTED CEILING PLAN
- 27. REFLECTED CEILING PLAN
- 28. REFLECTED CEILING PLAN
- 29. REFLECTED CEILING PLAN
- 30. REFLECTED CEILING PLAN
- 31. REFLECTED CEILING PLAN
- 32. REFLECTED CEILING PLAN
- 33. REFLECTED CEILING PLAN
- 34. REFLECTED CEILING PLAN
- 35. REFLECTED CEILING PLAN
- 36. REFLECTED CEILING PLAN
- 37. REFLECTED CEILING PLAN
- 38. REFLECTED CEILING PLAN
- 39. REFLECTED CEILING PLAN
- 40. REFLECTED CEILING PLAN
- 41. REFLECTED CEILING PLAN
- 42. REFLECTED CEILING PLAN
- 43. REFLECTED CEILING PLAN
- 44. REFLECTED CEILING PLAN
- 45. REFLECTED CEILING PLAN
- 46. REFLECTED CEILING PLAN
- 47. REFLECTED CEILING PLAN
- 48. REFLECTED CEILING PLAN
- 49. REFLECTED CEILING PLAN
- 50. REFLECTED CEILING PLAN
- 51. REFLECTED CEILING PLAN
- 52. REFLECTED CEILING PLAN
- 53. REFLECTED CEILING PLAN
- 54. REFLECTED CEILING PLAN
- 55. REFLECTED CEILING PLAN
- 56. REFLECTED CEILING PLAN
- 57. REFLECTED CEILING PLAN
- 58. REFLECTED CEILING PLAN
- 59. REFLECTED CEILING PLAN
- 60. REFLECTED CEILING PLAN
- 61. REFLECTED CEILING PLAN
- 62. REFLECTED CEILING PLAN
- 63. REFLECTED CEILING PLAN
- 64. REFLECTED CEILING PLAN
- 65. REFLECTED CEILING PLAN
- 66. REFLECTED CEILING PLAN
- 67. REFLECTED CEILING PLAN
- 68. REFLECTED CEILING PLAN
- 69. REFLECTED CEILING PLAN
- 70. REFLECTED CEILING PLAN
- 71. REFLECTED CEILING PLAN
- 72. REFLECTED CEILING PLAN
- 73. REFLECTED CEILING PLAN
- 74. REFLECTED CEILING PLAN
- 75. REFLECTED CEILING PLAN
- 76. REFLECTED CEILING PLAN
- 77. REFLECTED CEILING PLAN
- 78. REFLECTED CEILING PLAN
- 79. REFLECTED CEILING PLAN
- 80. REFLECTED CEILING PLAN
- 81. REFLECTED CEILING PLAN
- 82. REFLECTED CEILING PLAN
- 83. REFLECTED CEILING PLAN
- 84. REFLECTED CEILING PLAN
- 85. REFLECTED CEILING PLAN
- 86. REFLECTED CEILING PLAN
- 87. REFLECTED CEILING PLAN
- 88. REFLECTED CEILING PLAN
- 89. REFLECTED CEILING PLAN
- 90. REFLECTED CEILING PLAN
- 91. REFLECTED CEILING PLAN
- 92. REFLECTED CEILING PLAN
- 93. REFLECTED CEILING PLAN
- 94. REFLECTED CEILING PLAN
- 95. REFLECTED CEILING PLAN
- 96. REFLECTED CEILING PLAN
- 97. REFLECTED CEILING PLAN
- 98. REFLECTED CEILING PLAN
- 99. REFLECTED CEILING PLAN
- 100. REFLECTED CEILING PLAN



REFLECTED CEILING PLAN
 REFLECTED CEILING PLAN

3RD FLOOR PLAN
 3RD FLOOR PLAN

KEY PLAN
 KEY PLAN

WILSON + MARTINI, LLC
 Architects
 1811 Wilkes Barre Road
 Wilkes-Barre, PA 18201
 Phone: 717-326-1111
 Fax: 717-326-1112
 www.wilsonmartini.com

COCA Office
 Maryland Judiciary
 Office Renovation

MARYLAND JUDICIARY

ARCHITECT
 PROJECT NO. 2011-01
 DRAWING NO. 101
 DATE: December 20, 2011
 SCALE: 1/8" = 1'-0"

DESIGNER
 DATE: December 20, 2011
 SCALE: 1/8" = 1'-0"

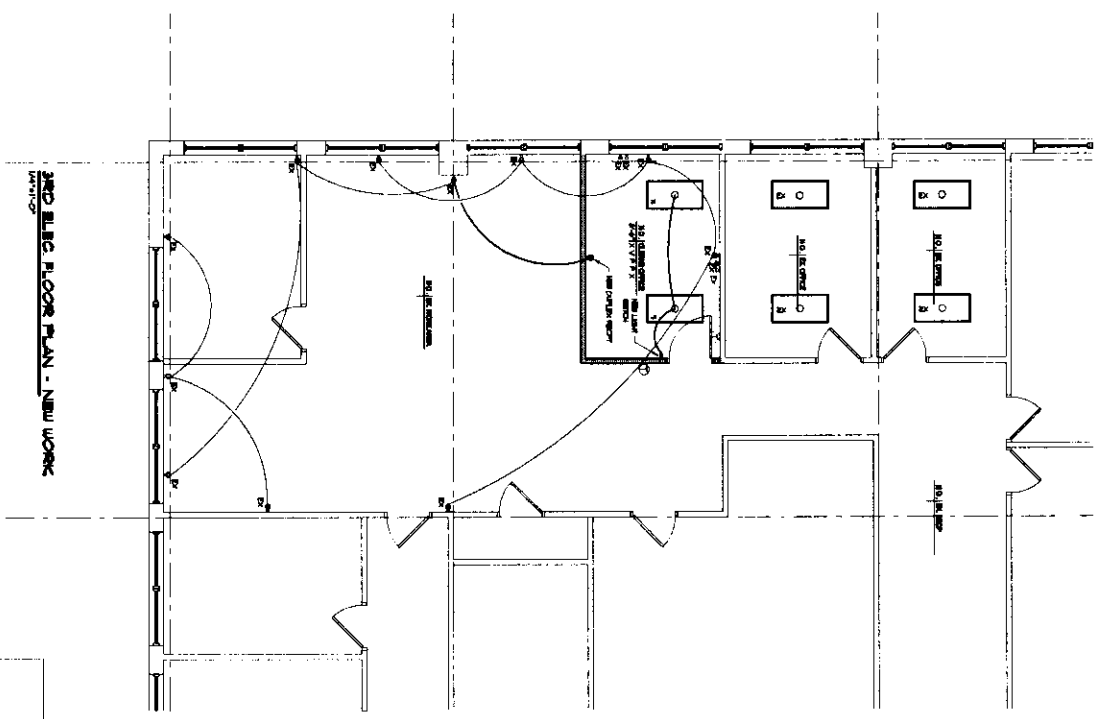
APPROVED
 SCALE: AS SHOWN
 DATE: December 20, 2011
 CDR FILE
 PROJECT NO.
 DRAWING TITLE
 SHEET TITLE

KEY PLAN
 KEY PLAN

A-1

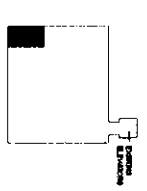
LEGEND

- 1. NEW OVERHEAD SERVICE
- 2. NEW SERVICE / OVERHEAD SERVICE TO NEW BUILDING OR EXISTING BUILDING
- 3. NEW SERVICE / OVERHEAD SERVICE TO EXISTING BUILDING OR EXISTING BUILDING
- 4. EXISTING SERVICE TO BE RELOCATED
- 5. EXISTING SERVICE TO BE REMOVED
- 6. NEW SERVICE TO BE REMOVED
- 7. EXISTING SERVICE TO BE REMOVED
- 8. EXISTING SERVICE TO BE REMOVED
- 9. EXISTING SERVICE TO BE REMOVED
- 10. EXISTING SERVICE TO BE REMOVED
- 11. EXISTING SERVICE TO BE REMOVED
- 12. EXISTING SERVICE TO BE REMOVED
- 13. EXISTING SERVICE TO BE REMOVED
- 14. EXISTING SERVICE TO BE REMOVED
- 15. EXISTING SERVICE TO BE REMOVED
- 16. EXISTING SERVICE TO BE REMOVED
- 17. EXISTING SERVICE TO BE REMOVED
- 18. EXISTING SERVICE TO BE REMOVED
- 19. EXISTING SERVICE TO BE REMOVED
- 20. EXISTING SERVICE TO BE REMOVED



3RD FLOOR PLAN - NEW WORK

Scale 1/8" = 1'-0"



NO.	REVISIONS	DATE

Approved/Authorized
 Project Engineer
 [Signature]
 [Stamp]

MARYLAND JUDICIARY
 COCA Office
 Maryland Judiciary
 Office Renovation

Rome Blvd and Taylor Ave
 3rd Floor
 Annapolis, Maryland 21401

Wilson + Martini, LLC
 Architects
 15111 Annapolis Road, Suite 100
 Annapolis, MD 21406
 410.426.9900
 www.wilsonmartini.com

- SYMBOLS**
- RELOCATED / PROPOSED (NOT FOR CON'T)
 - REMOVED
 - CONSTRUCTION DOCUMENTS

DRAWN	2P
CHECKED	3P
DATE	11/14/14
SCALE	AS SHOWN
DATE	11/14/14
DATE	11/14/14
PROJECT NO.	14-0000
DRAWING TITLE	ELECTRICAL PLAN

E-1