

FINISH SCHEDULE					
FIN NO	FLOOR	BASE	WALL	CEILING	REMARKS
F-1	VGT	VD	END/PT	ACT 1	
F-2	CONC-H	VD	END/PT	ACT 1	
F-3	CONC-H	VD	CAU/PT	ACT 1	
F-4	CONC-H	VD	END/PT	EXP/SEAPT	
F-5	VGT	VD	CAU/PT	ACT 1	
F-6	CONC	PT	CAU/PT	EXP/SEAPT	
F-7	CONC	PT	END/PT	EXP/SEAPT	
F-8	EPXY	PT-3	CAU/PT-3	CONC/PT	A-D HIGH CT
F-9	CT-1	CT-1	CT-1/END/PT	END/PT	
F-10	CT-1	VD	END/PT	ACT 1	
F-11	TERR	TERR	END/PT	ACT 1	
F-12	CT-3	WD	END/PT	ACT 2	
F-13	EPXY	PT-3	CAU/PT	END/PT	
F-14	CT-3	WD	END/PT/NO FIN	ACT 2/END/PT	SEE ELEV
F-15	VGT	VD	END/PT	END/PT	
F-16	CT-1	VD	END/PT	ACT 2	

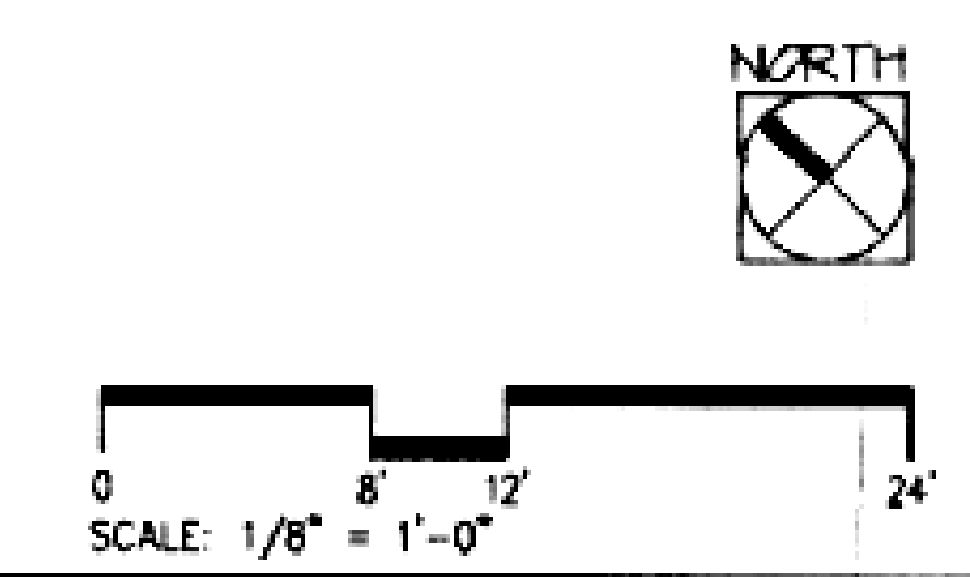
**FINISH SCHEDULE ABBREVIATIONS**

VGT VINYL COMPOSITION TILE  
 CONC CONCRETE  
 CONC-H CONCRETE W/ HARDENER  
 CT CERAMIC TILE  
 CPT CARPET  
 TERR TERRAZZO  
 VD VINYL BASE  
 PT PAINT  
 WD WOOD  
 GNB GYPSUM WALL BOARD  
 ACT ACoustIC CEILING TILE (TYPE 1, 2, 4 & TYPE 2, 2' X 2')  
 PFS EPoxy PAINT  
 PFS TEXTURED PLASTIC COATING



- GENERAL NOTES TO PLANS**
- DIMENSIONS ARE TO FINISH FACE OF WALL UNLESS OTHERWISE NOTED
  - ALL DOOR FRAMES ARE 6" FROM INTERSECTION OF PARTITIONS UNLESS OTHERWISE NOTED
  - EXTERIOR MASONRY WALLS AND WINDOW OPENING DIMENSIONS ARE NOMINAL BRICK COURSE DIMENSIONS SEE WINDOW SCHEDULE FOR EXACT ROUGH OPENINGS
  - REFER TO 1/8" SCALE FIRE PROTECTION PLANS FOR LOCATION OF FIRE RATED PARTITIONS
  - FOR DOOR SCHEDULE, SEE SPECIFICATIONS SECTION 0804
  - FOR PARTITION TYPES SEE DWG A104

**1 GROUND FLOOR PLAN**  
1/8" = 1'-0"



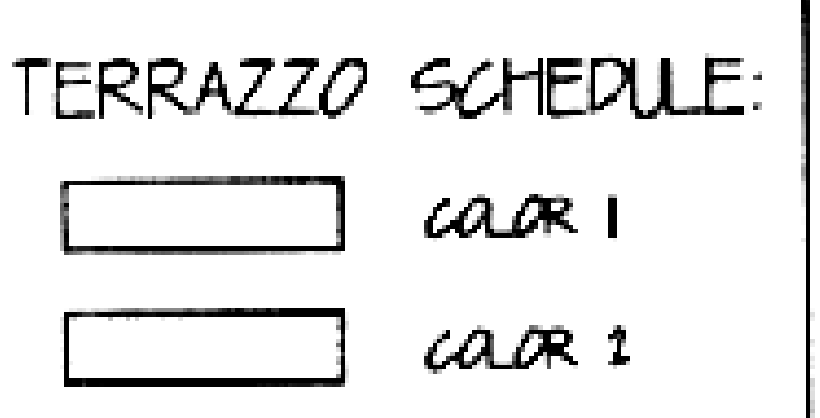
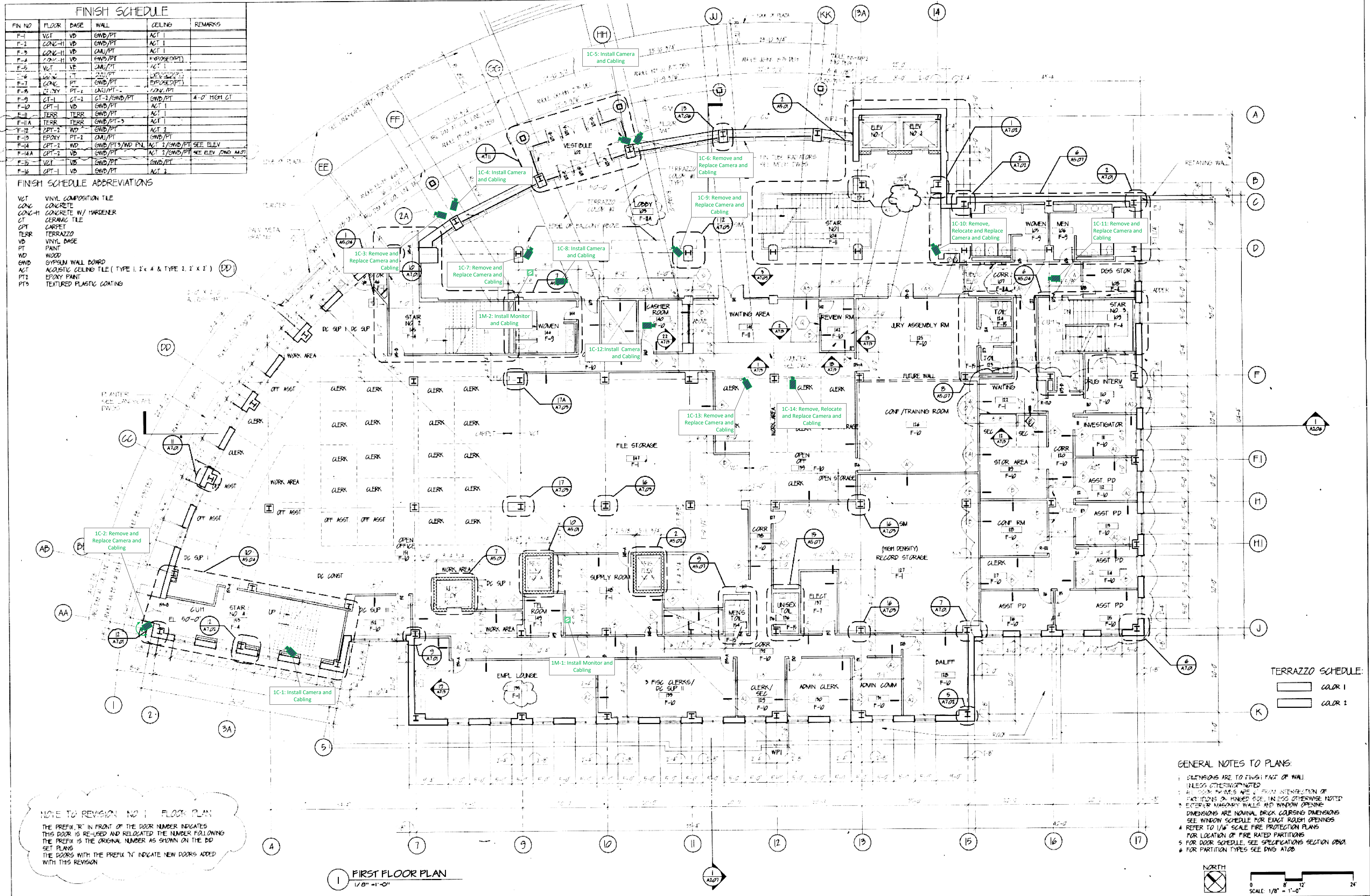
<b>LEE &amp; LIU ASSOCIATES</b> 1001 CONNECTICUT AVE. N.W. SUITE 825 WASHINGTON D.C. 20036 TEL 202 466-6666 FAX 202-466-4232	<b>A. MORTON THOMAS &amp; ASSOCIATES</b> 12750 TWINSBROOK PARKWAY SUITE 200, ROCKVILLE, MD 20852 TEL 301 891-2545 FAX 301 891-0814	<b>OAGLEY ASSOCIATES</b> 6141 EXECUTIVE BOULEVARD ROCKVILLE, MD 20852 TEL 301 881-9050 FAX 301 881-1925	<b>GIPE ASSOCIATES</b> DULANEY CENTER 1, SUITE 102 849 FAIRMOUNT AVENUE BALTIMORE, MD 21286 TEL 410 832-2420 FAX 410 832-3418	<b>AMMON/SPILLIS</b> A JOINT VENTURE J.A. AMMON & ASSOCIATES & SPILLIS CANDELA/WARNECKE 345 N. CHARLES ST. BALTIMORE, MD 21201 TEL 410 752-3310 FAX 410 752-8338	USING AGENCY APPROVAL FILE _____ DATE _____	DEPT OF GENERAL SERVICES APPROVAL  PROJECT ADMINISTRATOR  CHIEF ENGINEERING AND DESIGN	DRAWING TITLE <b>GROUND FLOOR PLAN</b> ANNAPOLIS DISTRICT COURT ROWE BOULEVARD AT TAYLOR AVENUE CITY OF ANNAPOLIS ANNE ARUNDEL COUNTY, MARYLAND	35 - 08 REVISIONS PROJECT NO. DGS-BC-000-911-001 DATE ISSUED 12.10.2019 DRAWING NO. <b>A1.01</b> DRAWN _____ CHECKED _____ DATE _____
								LANDSCAPE CIVIL CONSULTANT SEAL STRUCTURAL MECHANICAL, PLUMBING & ELECTRICAL ARCHITECTURE ARCHITECT SEAL



FIN NO	FLOOR	BASE	WALL	CEILING	REMARKS
F-1	VGT	VD	GWB/PT	ACT 1	
F-2	CONC-H	VD	GWB/PT	ACT 1	
F-3	CONC-H	VD	GWB/PT	ACT 1	
F-4	CONC-H	VD	GWB/PT	EXPOSED(PT)	
F-5	VGT	VD	GWB/PT	ACT 1	
F-6	CONC	PT	GWB/PT	EXPOSED(PT)	
F-7	CONC	PT	GWB/PT	EXPOSED(PT)	
F-8	CONC	PT-2	GWB/PT	EXPOSED(PT)	
F-9	CT-1	CT-2	CT-2/GWB/PT	GWB/PT	4'-0" HIGH CT
F-10	OPT-1	VD	GWB/PT	ACT 1	
F-11	TERR	TERR	GWB/PT	ACT 1	
F-11A	TERR	TERR	GWB/PT-3	ACT 1	
F-12	EPT-2	WD	GWB/PT	ACT 2	
F-13	EPOXY	PT-1	GWB/PT	GWB/PT	
F-14	OPT-2	VD	GWB/PT3/WD PNL	ACT 2/GWB/PT	SEE ELEV
F-14A	OPT-2	VD	GWB/PT	ACT 2/GWB/PT	SEE ELEV (CONG MAT)
F-15	VGT	VD	GWB/PT	GWB/PT	
F-16	OPT-1	VD	GWB/PT	ACT 2	

FINISH SCHEDULE ABBREVIATIONS

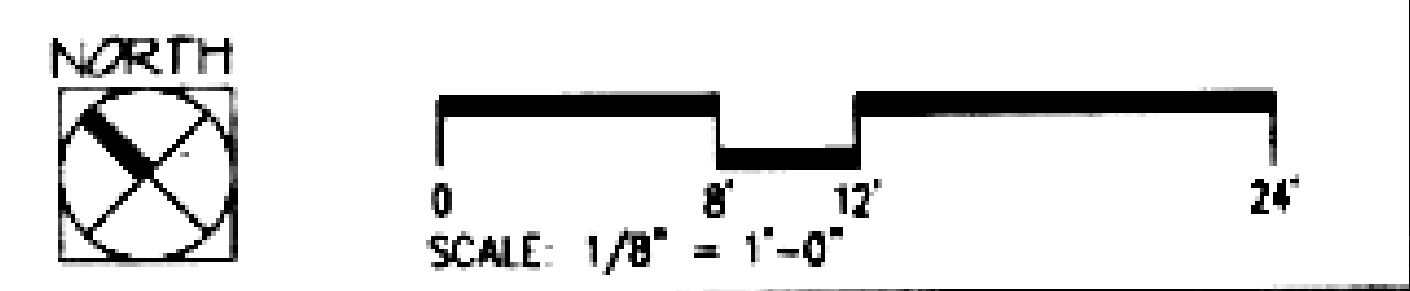
- VGT VINYL COMPOSITION TILE
- CONC CONCRETE
- CONC-H CONCRETE W/ HARDENER
- CT CERAMIC TILE
- CPT CARPET
- TERR TERRAZZO
- VD VINYL BASE
- PT PAINT
- WD WOOD
- GWB GYPSUM WALL BOARD
- ACT ACOUSTIC CEILING TILE (TYPE 1, 2' x 4' & TYPE 2, 2' x 2')
- PT1 EPOXY PAINT
- PT3 TEXTURED PLASTIC COATING



- GENERAL NOTES TO PLANS:
1. DIMENSIONS ARE TO FINISH FACE OF WALL UNLESS OTHERWISE NOTED
  2. ALL ROOM FINISHES ARE TO BE FROM INTERSECTION OF PARTITIONS ON HIGHER SIDE UNLESS OTHERWISE NOTED
  3. EXTERIOR MASONRY WALLS AND WINDOW OPENINGS DIMENSIONS ARE NOMINAL BRICK COURSE DIMENSIONS
  4. REFER TO 1/8" SCALE FIRE PROTECTION PLANS FOR LOCATION OF FIRE RATED PARTITIONS
  5. FOR DOOR SCHEDULE, SEE SPECIFICATIONS SECTION 0610
  6. FOR PARTITION TYPES SEE DWG AT08

NOTE TO REVISION NO 1 FLOOR PLAN  
 THE PREFIX "R" IN FRONT OF THE DOOR NUMBER INDICATES THIS DOOR IS RE-USED AND RELOCATED THE NUMBER FOLLOWING THE PREFIX IS THE ORIGINAL NUMBER AS SHOWN ON THE DD SET PLANS THE DOORS WITH THE PREFIX "N" INDICATE NEW DOORS ADDED WITH THIS REVISION

1 FIRST FLOOR PLAN  
 1/8" = 1'-0"



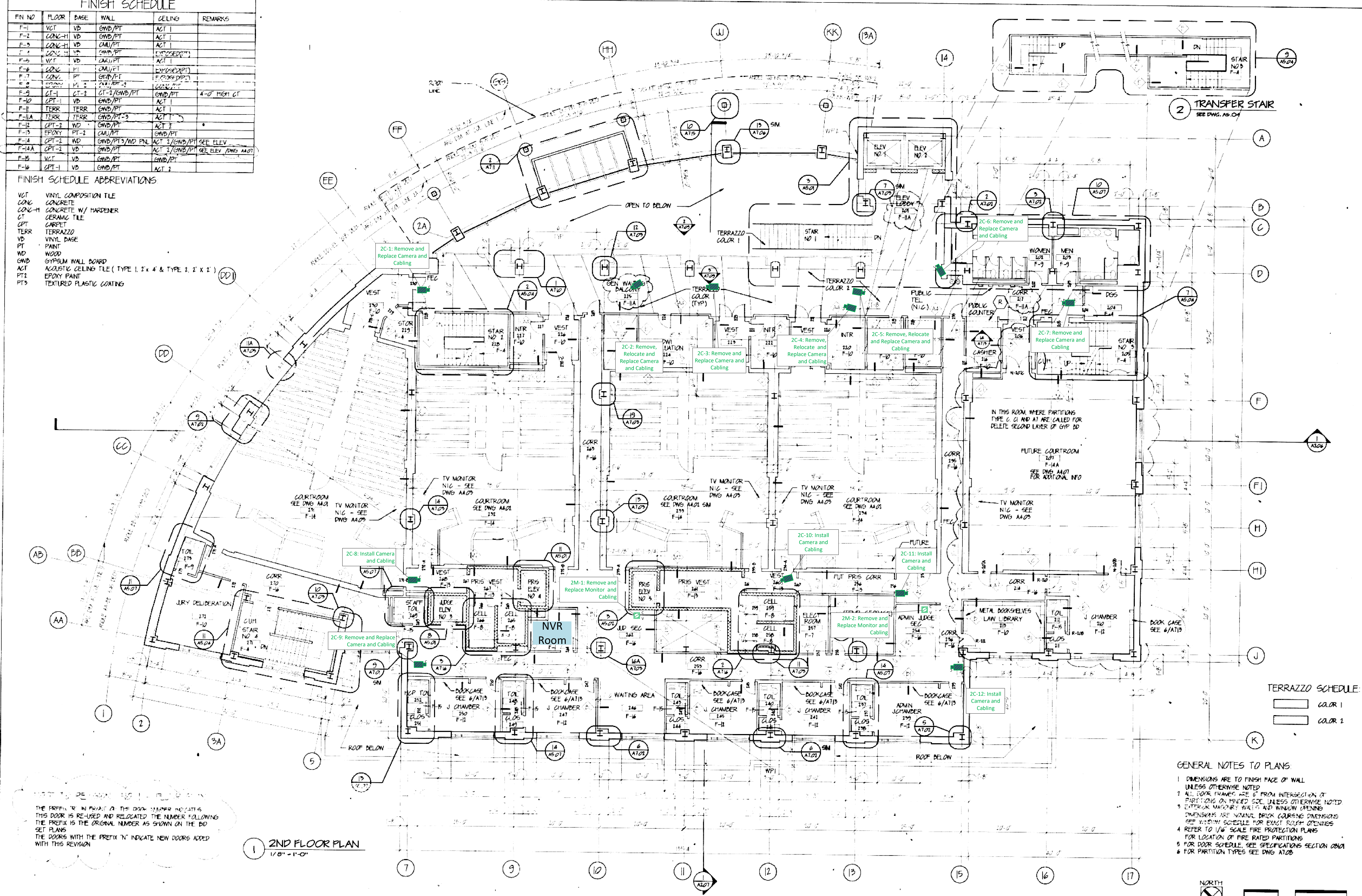
<b>LEE &amp; LIU ASSOCIATES</b> 1001 CONNECTICUT AVE NW SUITE 825 WASHINGTON DC 20036 TEL 202-466-6666 FAX 202-466-4232	<b>A. MORTON THOMAS &amp; ASSOCIATES</b> 12750 TWINBROOK PARKWAY SUITE 200, ROCKVILLE, MD 20852 TEL 301-881-2345 FAX 301-881-0914	<b>CAGLEY ASSOCIATES</b> 6141 EXECUTIVE BOULEVARD ROCKVILLE, MD 20852 TEL 301-881-9050 FAX 301-881-1123	<b>GIPE ASSOCIATES</b> DULANEY CENTER I, SUITE 102 849 FAIRMOUNT AVENUE BALTIMORE, MD 21286 TEL 410-832-2420 FAX 410-832-2410	<b>AMMON/SPILLIS</b> A JOINT VENTURE J.A. AMMON & ASSOCIATES & SPILLIS CANDELA/WARNECKE 245 N CHARLES ST BALTIMORE MD 21201 TEL 410-752-3510 FAX 410-752-8358	USING AGENCY APPROVAL _____ TITLE _____ DATE _____	DEPT OF GENERAL SERVICES APPROVAL PROJECT ADMINISTRATOR _____ DATE _____ CHIEF ENGINEERING AND DESIGN _____ DATE _____	DRAWING TITLE <b>1ST FLOOR PLAN</b> ANNAPOLIS DISTRICT COURT ROWE BOULEVARD AT TAYLOR AVENUE CITY OF ANNAPOLIS ANNE ARUNDEL COUNTY, MARYLAND	95-98 REVISIONS 1 12/18/97 2 3 4 5 6 DRAWING NO <b>A1.02</b> DRAWN BY _____ CHECKED BY _____ DATE _____
---	--	--	---	--	--	--	---	--



FIN NO	FLOOR	BASE	WALL	CEILING	REMARKS
F-1	VD	VD	GND/PT	ACT 1	
F-2	CONC-H	VD	GND/PT	ACT 1	
F-3	CONC-H	VD	GND/PT	ACT 1	
F-4	CONC-H	VD	GND/PT	ACT 1	
F-5	VD	VD	GND/PT	ACT 1	
F-6	CONC	PT	GND/PT	ACT 1	
F-7	CONC	PT	GND/PT	ACT 1	
F-8	CONC	PT	GND/PT	ACT 1	
F-9	CT-1	CT-2	CT-3/GND/PT	GND/PT	4'-0" HIGH CT
F-10	TERR	TERR	GND/PT	ACT 1	
F-11A	TERR	TERR	GND/PT-2	ACT 1	
F-12	EPT-2	VD	GND/PT	ACT 2	
F-13	EPOXY	PT-2	GND/PT	ACT 2	
F-14	EPT-2	VD	GND/PT-3/NO PNL	ACT 2/GND/PT	SEE ELEV
F-14A	EPT-2	VD	GND/PT	ACT 2/GND/PT	SEE ELEV /DWG A407
F-15	VD	VD	GND/PT	ACT 2	
F-16	EPT-1	VD	GND/PT	ACT 2	

**FINISH SCHEDULE ABBREVIATIONS**

VGT VINYL COMPOSITION TILE  
 CONC CONCRETE  
 CONC-H CONCRETE W/ HARDENER  
 CT CERAMIC TILE  
 CPT CARPET  
 TERR TERRAZZO  
 VD VINYL DASE  
 PT PAINT  
 WD WOOD  
 GND GYPSUM WALL BOARD  
 ACT ACOUSTIC CEILING TILE (TYPE 1, 2' x 4' & TYPE 2, 2' x 1')  
 PT2 EPOXY PAINT  
 PT3 TEXTURED PLASTIC COATING



**2ND FLOOR PLAN**  
1/8" = 1'-0"

**TERRAZZO SCHEDULE**

COLOR 1  
 COLOR 2

- GENERAL NOTES TO PLANS**
- 1 DIMENSIONS ARE TO FINISH FACE OF WALL UNLESS OTHERWISE NOTED
  - 2 ALL COR FRAMES ARE 6" FROM INTERSECTION OF PARTITIONS ON FINISHED SOE UNLESS OTHERWISE NOTED
  - 3 EXTERIOR MASONRY WALLS AND WINDOW OPENING DIMENSIONS ARE NOMINAL BRICK COURSE DIMENSIONS SEE WINDOW SCHEDULE FOR EXACT SIZES AND OPENINGS
  - 4 REFER TO 1/16" SCALE FIRE PROTECTION PLANS FOR LOCATION OF FIRE RATED PARTITIONS
  - 5 FOR DOOR SCHEDULE, SEE SPECIFICATIONS SECTION 0800
  - 6 FOR PARTITION TYPES SEE DWG A206

THE PREFIX 'R' IN FRONT OF THE DOOR NUMBER INDICATES THIS DOOR IS RE-USED AND RELOCATED THE NUMBER FOLLOWING THE PREFIX IS THE ORIGINAL NUMBER AS SHOWN ON THE BID SET PLANS  
 THE DOORS WITH THE PREFIX 'N' INDICATE NEW DOORS ADDED WITH THIS REVISION

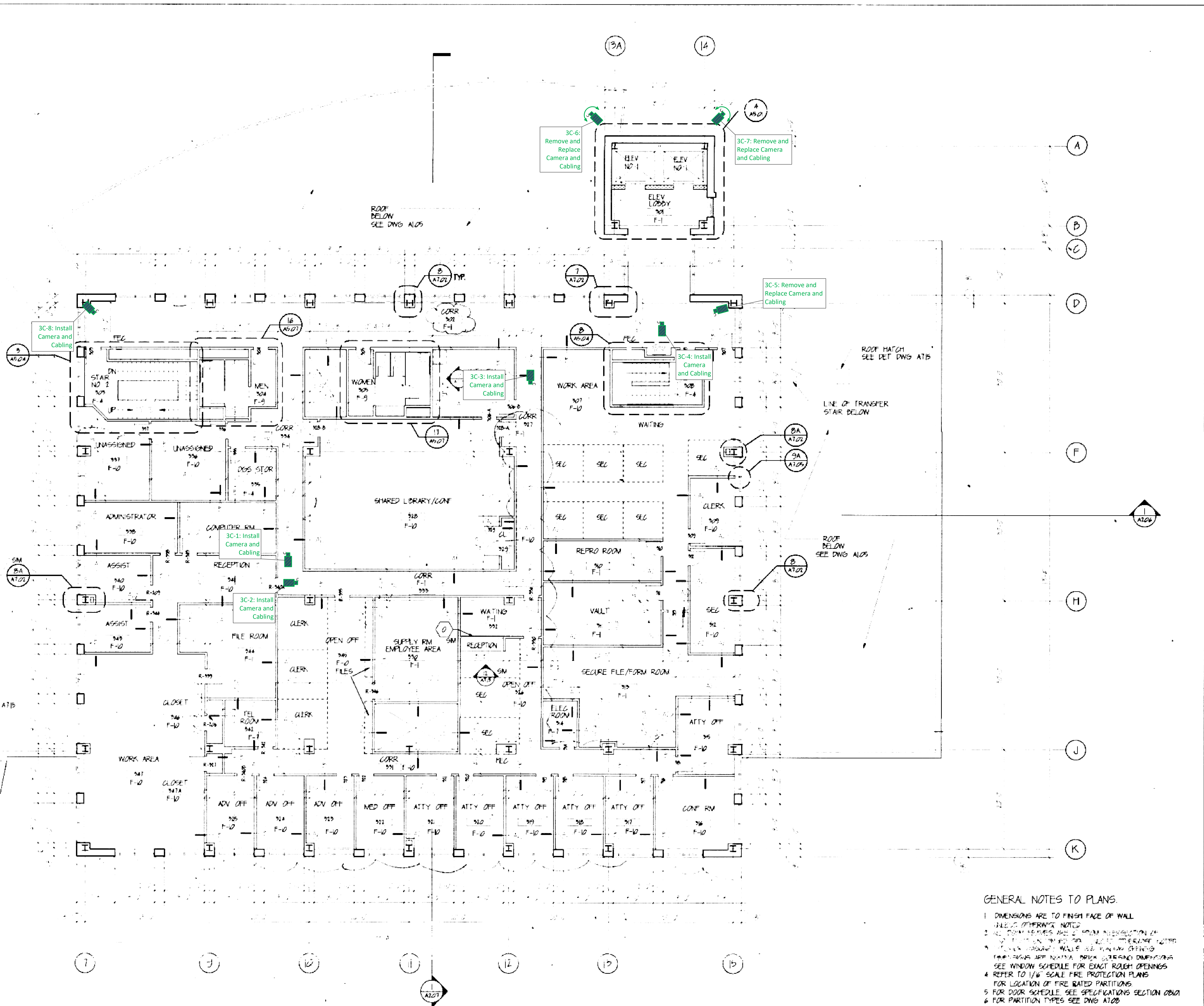
<b>LEE &amp; LIU ASSOCIATES</b> 1001 CONNECTICUT AVE NW SUITE 825 WASHINGTON DC 20036 TEL 202-466-6666 FAX 202-466-4332	<b>A. MORTON THOMAS &amp; ASSOCIATES</b> 12750 TWINBROOK PARKWAY SUITE 200, ROCKVILLE MD 20852 TEL 301-881-2545 FAX 301-881-0814	<b>CAGLEY ASSOCIATES</b> 6141 EXECUTIVE BOULEVARD ROCKVILLE, MD 20852 TEL 301-881-9000 FAX 301-881-1125	<b>GIPE ASSOCIATES</b> DULANEY CENTER 1, SUITE 102 849 FAIRMOUNT AVENUE BALTIMORE, MD 21286 TEL 410-832-2420 FAX 410-332-2418	<b>AMMON/SPILLIS</b> A JOINT VENTURE J.A. AMMON & ASSOCIATES & SPILLIS CANDELA/WARNECKE 345 N CHARLES ST BALTIMORE MD 21201 TEL 410-757-3510 FAX 410-752-8358	USING AGENCY APPROVAL TITLE _____ DATE _____	DEPT OF GENERAL SERVICES APPROVAL PROJECT ADMINISTRATION OFFICER _____ DATE _____ CHIEF ENGINEERING AND DESIGN _____ DATE _____	DRAWING TITLE <b>2ND FLOOR PLAN</b> ANNAPOLIS DISTRICT COURT ROWE BOULEVARD AT TAYLOR AVENUE CITY OF ANNAPOLIS ANNE ARUNDEL COUNTY, MARYLAND	95-96 REVISIONS 1 PER 12/1997 DATE ISSUED AUG. 30, 1996 DRAWING NO. <b>A1.03</b> DRAWN BY _____ CHECKED BY _____ JAA NO _____
								PROJECT NO DGS-BC-000-911-001 DATE ISSUED AUG. 30, 1996 DRAWING NO. <b>A1.03</b> SHOWN BY _____ OF _____



FINISH SCHEDULE					
FIN NO	FLOOR	BASE	WALL	CEILING	REMARKS
F-1	VCT	VB	GWB/PT	ACT 1	
F-2	CONC-M	VB	GWB/PT	ACT 1	
F-3	CONC-M	VB	GWB/PT	ACT 1	
F-4	CONC-M	VB	GWB/PT	EXP/SED/PT	
F-5	VCT	VB	GWB/PT	ACT 1	
F-6	CONC-M	PT	GWB/PT	EXP/SED/PT	
F-7	CONC-M	PT	GWB/PT	EXP/SED/PT	
F-8	EPOXY	PT-2	GWB/PT-2	CONC/PT	
F-9	CT-1	CT-2	CT-2/GWB/PT	GWB/PT	4'-0" HIGH CT
F-10	CPT-1	VB	GWB/PT	ACT 1	
F-11	TERR	TERR	GWB/PT	ACT 1	
F-11A	TERR	TERR	GWB/PT-3	ACT 1	
F-12	CPT-2	WD	GWB/PT	ACT 2	
F-13	EPOXY	PT-2	GWB/PT	GWB/PT	
F-14	CPT-2	WD	GWB/PT-3/WD PNL	ACT 2/GWB/PT	SEE ELEV
F-14A	CPT-2	VB	GWB/PT	ACT 2/GWB/PT	SEE ELEV /DWS ADD
F-5	VCT	VB	GWB/PT	GWB/PT	
F-6	CPT-1	VB	GWB/PT	ACT 2	

FINISH SCHEDULE ABBREVIATIONS:

- VCT VINYL COMPOSITION TILE
- CONC CONCRETE
- CONC-M CONCRETE W/ HARDENER
- CT CERAMIC TILE
- CPT CARPET
- TERR TERRAZZO
- VB VINYL BASE
- PT PAINT
- WD WOOD
- GWB GYPSUM WALL BOARD
- ACT ACOUSTIC CEILING TILE (TYPE 1 2' x 4' & TYPE 2 2' x 2')
- PT2 EPOXY PAINT
- PT3 TEXTURED PLASTIC COATING



NOTE TO REVISION NO 1 - FLOOR PLAN  
 THE DOORS WITH THE PREFIX 'N' INDICATE NEW DOORS ADDED WITH THIS REVISION

- GENERAL NOTES TO PLANS:
1. DIMENSIONS ARE TO FINISH FACE OF WALL UNLESS OTHERWISE NOTED
  2. ALL ROOMS ARE PERMITTED TO BE OCCUPIED UNLESS OTHERWISE NOTED
  3. ALL EXTERIOR WALLS ARE TO BE CONFORMING TO THE 2000 INTERNATIONAL BUILDING CODE
  4. REFER TO 1/4" SCALE FIRE PROTECTION PLANS FOR LOCATION OF FIRE RATED PARTITIONS
  5. FOR DOOR SCHEDULE SEE SPECIFICATIONS SECTION 0800
  6. FOR PARTITION TYPES SEE DWG A108

<b>LEE &amp; LIU ASSOCIATES</b> 1001 CONNECTICUT AVE NW SUITE 825 WASHINGTON DC 20006 TEL 202-466-6866 FAX 202-466-4232	<b>A. MORTON THOMAS &amp; ASSOCIATES</b> 12790 TWINBROOK PARKWAY SUITE 200, ROCKVILLE, MD 20852 TEL 301-981-2544 FAX 301-981-0814	<b>CAGLEY ASSOCIATES</b> 6141 EXECUTIVE BOULEVARD ROCKVILLE MD 20852 TEL 301-981-9090 FAX 301-981-1125	<b>GIPE ASSOCIATES</b> DULANEY CENTER 1 SUITE 102 849 FAIRMOUNT AVENUE BALTIMORE MD 21286 TEL 410-832-2420 FAX 410-832-2416	<b>AMMON/SPILLS</b> A JOINT VENTURE J.A. AMMON & ASSOCIATES & SPILLS CANDELA/WARNECKE 345 N. CHARLES ST BALTIMORE, MD 21201 TEL 410-752-3510 FAX 410-752-8358	USING AGENCY APPROVAL   	DEPT OF GENERAL SERVICES APPROVAL   	3RD FLOOR PLAN <b>ANNAPOLIS DISTRICT COURT</b> ROWE BOULEVARD AT TAYLOR AVENUE CITY OF ANNAPOLIS ANNE ARUNDEL COUNTY, MARYLAND	95-96 REVISIONS 1 DEC 16 1991 2 3 4 5 6 DRAWN BY: [ ] CHECKED BY: [ ] DATE: [ ] SHEET NO: [ ] OF [ ]	DGS BC 000-911-001 DATE: [ ] SCALE: [ ] <b>A1.04</b>
---	--	---	---	--	-----------------------------------	---	--	---	---